

YEAR 2006

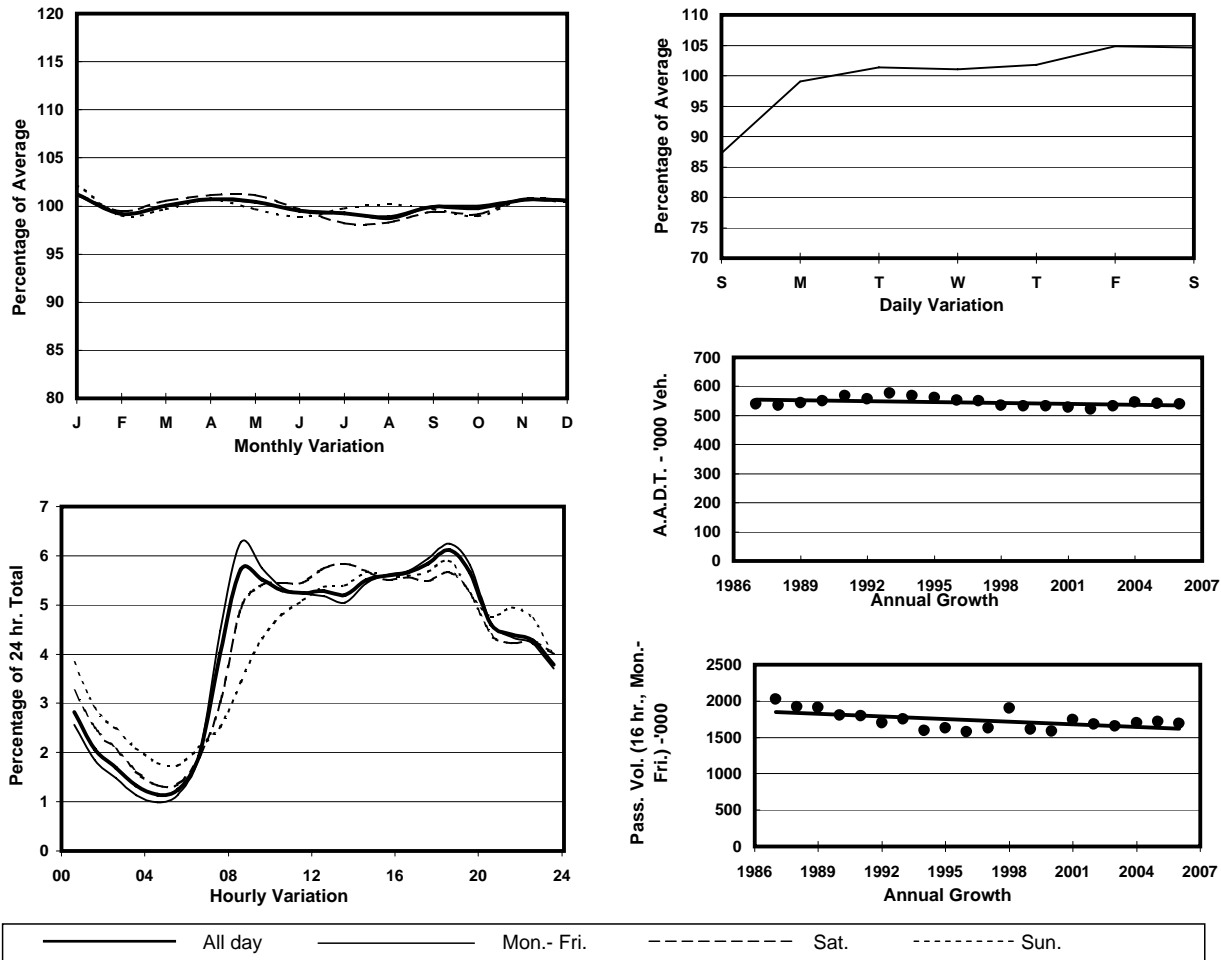
Location

Screenline A-A(Urban Railway Line)

Stations on Cordon/Screenline

3001, 3002, 4202, 4203, 4204, 4205, 4206, 4207, 4208, 4221 and 4401

## 1. TRAFFIC FLOW VARIATION AND GROWTH



## 2. TRAFFIC CHARACTERISTICS (BY DIRECTION)

Parameter	All - Day	Mon. - Fri.	Sat.	Sun.
<b>EAST BOUND</b>				
A.A.D.T.	280600	286910	297520	246550
R 12 / 24 - %	64.3	65.5	63.5	58.6
R 16 / 24 - %	83.7	84.9	81.8	78.6
AM Peak Hour	0800-0900	0800-0900	0900-1000	0900-1000
One-way flow at AM peak hour	15480	17260	15800	10340
T - % (AM)	-	14.3	-	-
PM Peak Hour	1800-1900	1800-1900	1800-1900	1800-1900
One-way flow at PM peak hour	17330	18100	17000	14730
T - % (PM)	-	9.5	-	-
Prop.of commercial vehicles - 16 hr.	-	12	-	-

<b>WEST BOUND</b>				
A.A.D.T.	258760	265180	270590	228190
R 12 / 24 - %	65.7	67	64.2	60.3
R 16 / 24 - %	84.3	85.5	82.2	79.6
AM Peak Hour	0800-0900	0800-0900	0900-1000	0900-1000
One-way flow at AM peak hour	15380	17390	14960	10180
T - % (AM)	-	10.3	-	-
PM Peak Hour	1800-1900	1800-1900	1800-1900	1800-1900
One-way flow at PM peak hour	15640	16350	15220	13340
T - % (PM)	-	8.7	-	-
Prop.of commercial vehicles - 16 hr.	-	10.5	-	-

## 3. OTHER INFORMATION AND COMMENT

**4. Vehicle classification and occupancy - Monday to Friday**

Time		Class of vehicle									
		Motor	Private	Taxi	Private	PLB	Goods veh.		Non	Fr. Bus	
		Cycle	Car		LB		Light	M & H	Fr. Bus	SD	DD
0700-0800	Pro	4.3	21.5	30.3	1.9	5.9	18.3	5.1	6.7	0.1	5.8
	Ocp	1.1	1.5	1.9	5.0	10.3	1.5	1.3	10.3	8.6	36.6
0800-0900 Peak Hour	Pro	4.4	36.9	25.5	1.2	5.2	14.9	4.3	3.8	0.1	3.8
	Ocp	1.1	1.4	1.9	3.9	13.3	1.7	1.5	13.9	13.7	49.0
0900-1000	Pro	2.7	32.3	26.3	1.2	4.4	20.6	5.5	2.7	0.1	4.2
	Ocp	1.1	1.4	1.8	2.6	11.5	1.7	1.4	12.1	8.0	30.6
1000-1100	Pro	2.7	27.3	25.3	1.2	3.5	27.9	6.7	1.7	0.1	3.8
	Ocp	1.1	1.5	1.8	3.0	9.4	1.6	1.5	8.2	8.7	26.2
1100-1200	Pro	2.8	26.7	24.3	1.2	3.5	28.9	7.0	2.3	0.1	3.4
	Ocp	1.1	1.5	1.9	2.3	8.9	1.5	1.5	8.1	8.7	27.5
1200-1300	Pro	2.3	28.3	26.2	1.8	3.7	25.7	5.6	3.2	0.1	3.2
	Ocp	1.1	1.5	1.9	4.7	9.7	1.6	1.5	13.8	9.8	26.7
1300-1400	Pro	2.6	28.9	24.9	1.5	3.7	25.6	6.4	2.9	0.1	3.5
	Ocp	1.1	1.5	1.9	2.9	10.5	1.6	1.4	8.2	8.6	29.8
1400-1500	Pro	2.6	30.5	23.4	1.5	3.2	27.2	6.4	1.8	0.1	3.2
	Ocp	1.1	1.6	1.9	2.8	10.3	1.6	1.4	8.9	9.8	29.2
1500-1600	Pro	2.4	31.4	22.7	1.9	3.4	26.3	6.1	2.7	0.1	3.3
	Ocp	1.0	1.5	1.9	3.1	11.1	1.6	1.5	12.1	10.1	30.3
1600-1700	Pro	2.8	30.3	25.9	1.3	3.8	23.4	5.9	3.0	0.1	3.5
	Ocp	1.0	1.5	1.8	2.8	11.7	1.6	1.5	8.2	9.8	32.5
1700-1800	Pro	4.0	35.9	21.9	0.8	4.0	21.8	4.9	2.5	0.1	4.2
	Ocp	1.1	1.5	1.9	2.8	13.0	1.6	1.5	7.4	13.1	39.4
1800-1900	Pro	5.1	41.2	24.0	0.8	4.4	15.5	2.9	2.5	0.1	3.5
	Ocp	1.1	1.5	2.1	2.6	15.1	1.7	1.4	14.2	11.3	53.6
1900-2000	Pro	3.3	45.7	26.8	0.3	5.3	11.1	1.9	2.0	0.1	3.6
	Ocp	1.1	1.5	2.0	2.3	13.6	1.6	1.4	11.9	13.7	43.2
2000-2100	Pro	2.7	41.5	32.2	0.4	6.3	9.6	1.9	1.5	0.1	3.7
	Ocp	1.1	1.5	2.0	1.9	12.0	1.6	1.4	9.7	6.1	32.6
2100-2200	Pro	3.7	40.0	35.8	0.3	5.4	7.4	1.5	1.6	0.1	4.1
	Ocp	1.2	1.6	2.0	3.4	11.5	1.7	1.4	5.4	5.3	29.8
2200-2300	Pro	2.9	40.1	39.0	0.3	6.0	4.7	1.2	1.4	0.1	4.2
	Ocp	1.1	1.7	1.9	2.7	11.2	1.7	1.3	6.7	5.0	30.2
16 hours	Pro	3.2	33.8	26.7	1.1	4.4	19.6	4.7	2.6	0.1	3.8
	Ocp	1.1	1.5	1.9	3.2	11.7	1.6	1.5	10.5	9.3	34.9

**Legend**

- Pro.** Proportion of vehicles in % (Sum may not add up to 100% due to figure rounding)
- Ocp.** Average occupancy of vehicles
- M & H** Medium and Heavy